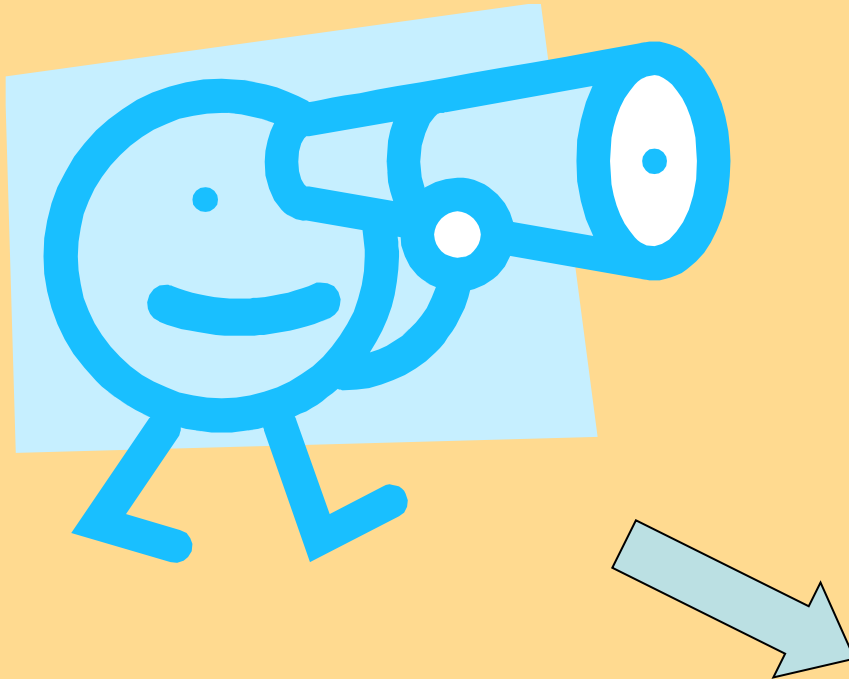




Project Evaluation and REPORT PLANNING

Part 1 of 2





Background to Project

2002 - 2005

The Book on Queenie

Community Cultural Leader 1920's - 1998

Book Project 2002 - current





Ngali Ngalim Purru

1st Meeting to form Organisation 2002



Proposal to Argyle

January 2003



Wathaurong visited Warmun 2003



Developing Ngali Ngalim Purru

Visit to Wathaurong Aboriginal Co-operative Victoria and to look at Wathaurong Glass enterprise.



Kija Women's Visits to Melbourne East Timorese and Narana
Aboriginal Culture Centres, Victoria
Cultural Enterprise Research



Visit to Werribee Open Plains Zoo



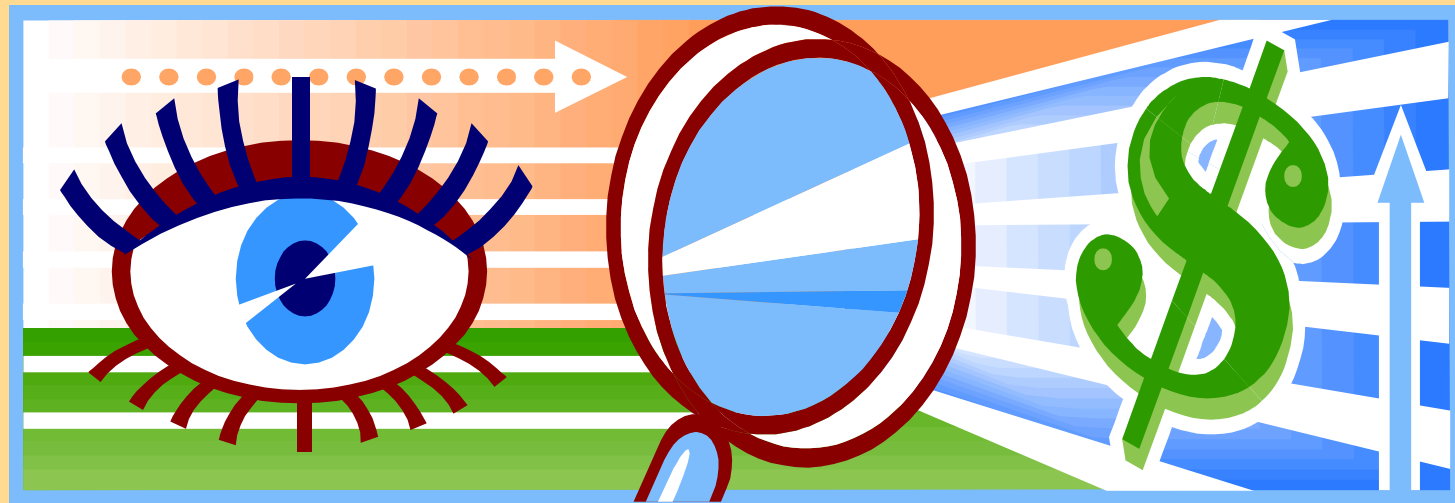


NNP members attended the Narana Forum 2004



Looking for funding for NNP

2004 - 2005





The Women's Development Project

29th January – 29th June 2006





Cultural Mapping © 2010

Reclaiming women's assets





Quotes from Builder to upgrade women's buildings



Planning - Cultural Bush Garden

